



Copyright 2005-2006 Salmantine Trading c.c., Cape Town, South Africa
Patent Pending : ZA PCT 2006/00048
[Http://www.faxplatform.za.net](http://www.faxplatform.za.net)

FaxPL@form® Fax-out Driver **Version 2.2**

Release Notes

Version 2.2

May 2006

Copyright 2005-2006 Salmantine Trading c.c., Cape Town, South Africa

Patent Pending : ZA PCT 2006/00048

<http://www.faxplatform.za.net>

Contents

This document contains information on the following topics:

- 1.0 Welcome
- 2.0 System Requirements
- 3.0 Installation
- 4.0 Setup
- 5.0 Sending faxes from your PC
- 6.0 Credits
- 7.0 Download and support web links

1.0 Welcome

Thank you for installing **FaxPL@form™ Fax Driver Version 2.2**

This document contains information about installing and using the fax driver on your computer, and applications.

2.0 System Requirements

The following lists the minimum system requirements for using the FaxPL@form Fax Driver:

400 MHz processor or higher

128MB RAM

Windows 2000, Millenium, NT or XP

Internet Explorer 4 or later (IE 5 installer included on CD)

NB: This service requires online connectivity to the mail server chosen.

3.0 Installation

Please Note that Windows XP only requires the “**print2fax.msi**” file while ALL previous Windows versions mentioned above require the FULL (and much larger) installation set. Windows 98, earlier Microsoft Operating Systems, and other operating systems are not supported at this time. Please let us know if this is a problem so we can work towards a solution.

In order to use FaxOut you will require a login username and password in order to:

- download the FaxOut driver
- purchase credits (unless credit has been allocated by your company)
- view your fax logs
- amend your details and other functions

For Windows XP, the install utility **print2fax.msi** located in the downloaded zipfile creates any necessary folders and copies all files required.

To install the fax driver:

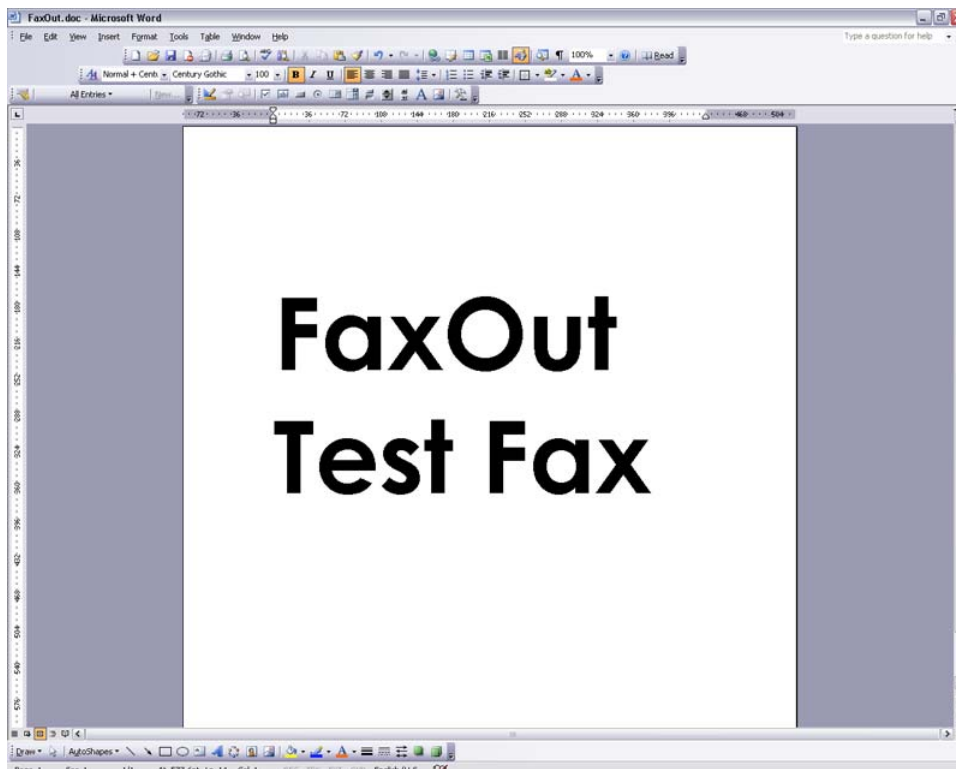
1. Double click on the **print2fax.msi** and follow the on-screen prompts to complete the installation.

Note: If you have any other version of the FaxPI@form Driver installed on your computer, be sure to completely remove it from your PC and reboot your machine BEFORE installing the FaxOut driver.

4.0 Setting up your fax driver

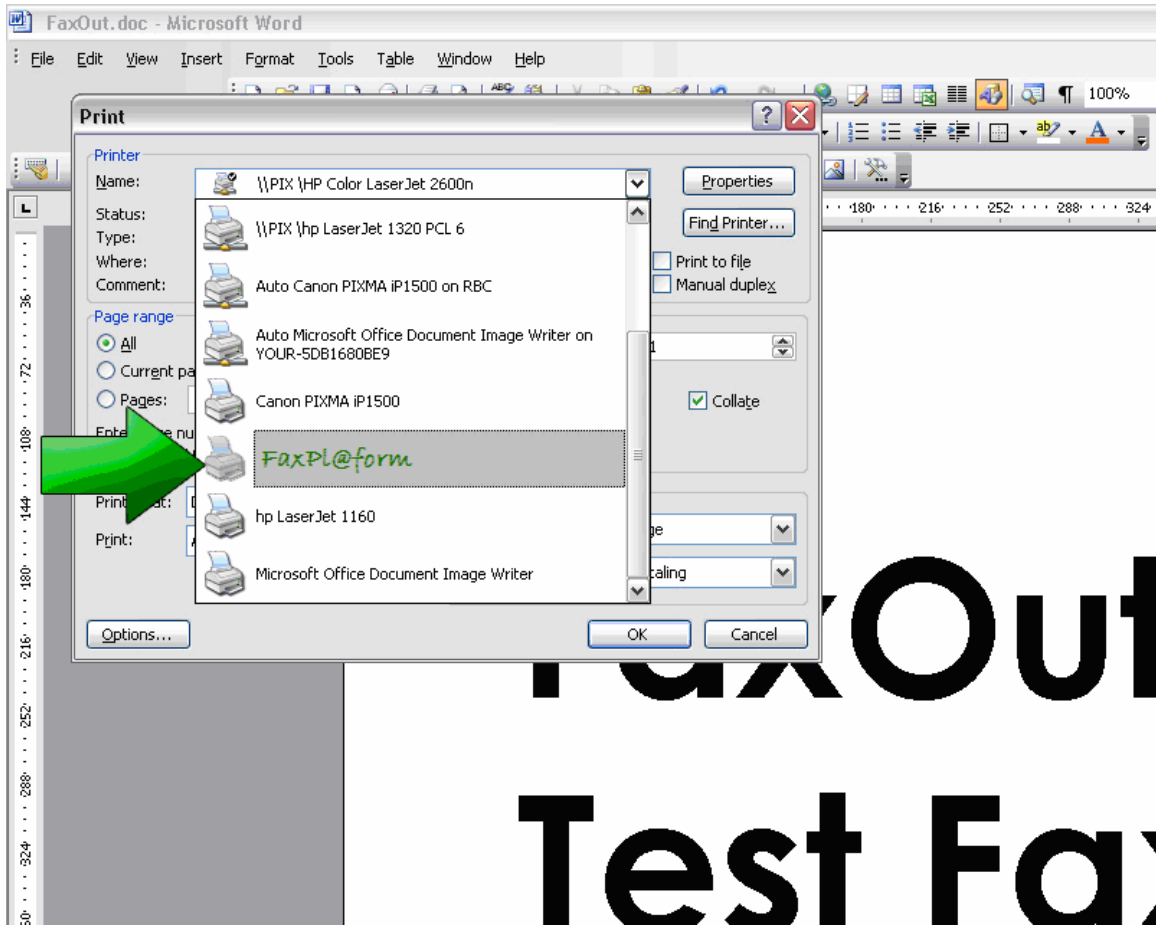
Step 1

Once installed, create a new document in any application, i.e. Microsoft Word



Step 2

Go, file print and select FaxPI@form ver 2.1.2.0 and click OK.



FaxOut Test Fax

Step 3
Click on **SETUP**

FaxOut ver 2.0

Recipient Information
Enter the name and number of the person you want to send the fax to.
This information will automatically be added to your coverpage if selected.

Recipient Name:

Recipient Number:

Recipients:

Name	Fax

Subject:

Memo:

Send Coversheet

Buttons: Add, Addressbook, Preview, About, Setup, Cancel, Send Fax

Powered By FaxPlatform.com
Copyright © 2006 Salmantine



Step 4

Enter all your details as per your Welcome email you received when you signed up for fax services. Please complete ALL fields as this information is also used to notify the fax recipient of your details.

FaxOut ver 2.0

Personal Information
Enter your name and other personal details as requested

* First name :

* Surname :

Company:

* Fax-to-Email Fax Number : 0866066666

* Email address :

* Fax-to-Email Username : Request Password

* Fax-to-Email Password : Check to save password

* - Mandatory fields - Please ensure that these fields are correct!

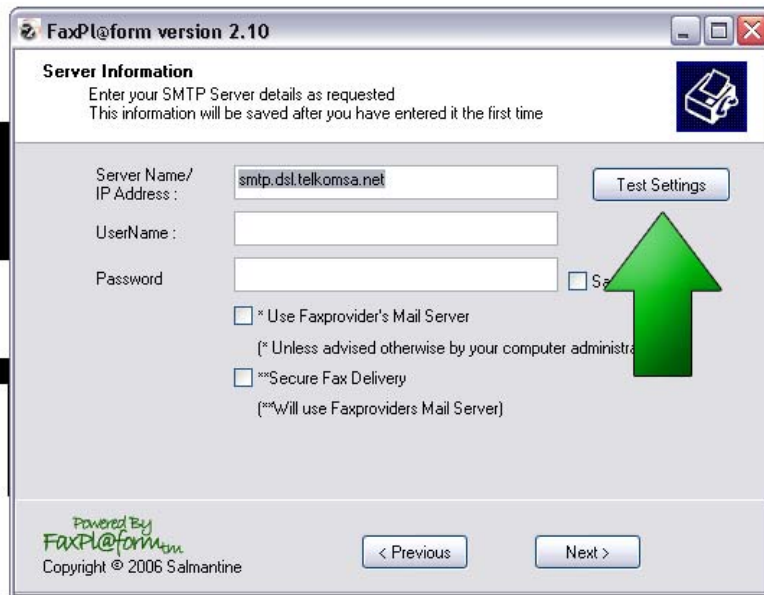
Powered By
FaxPl@form.com
Copyright © 2006 Salmantine

Next >

PLEASE ensure that you details are correct!
Should they not be right then FaxOut will not work.

Step 5

Set your SMTP name or IP address, and click on next. The default "Faxprovider's Mail Server" settings will typically work unless your firewall prevents such operation. If this is the case then please consult your system/network administrator for suitable details to be entered here.



The screenshot shows a window titled "FaxPlatform version 2.10" with a "Server Information" section. The instructions state: "Enter your SMTP Server details as requested. This information will be saved after you have entered it the first time." The form includes the following fields and options:

- Server Name/ IP Address :
- UserName :
- Password : Secure
- * Use Faxprovider's Mail Server
[* Unless advised otherwise by your computer administrator]
- **Secure Fax Delivery
[**Will use Faxproviders Mail Server]

At the bottom, there is a logo for "Powered By FaxPlatform" and "Copyright © 2006 Salmantine". Navigation buttons include "< Previous" and "Next >". A large green arrow points upwards towards the "Test Settings" button.

5.0 Sending a fax.

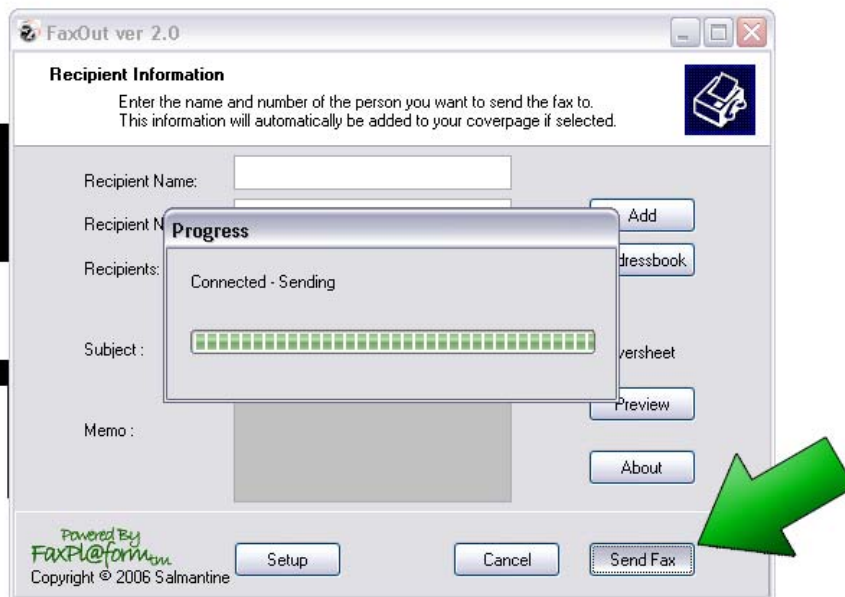
Enter the recipient's details (name and number including area code), click Add and then click on **SEND FAX**

Click "  " button to get fax recipient details from Microsoft Outlook.



The screenshot shows the 'FaxOut ver 2.0' application window. The title bar reads 'FaxOut ver 2.0'. The main area is titled 'Recipient Information' and contains the following fields and controls:

- Recipient Name:** A text input field containing 'ENTER DETAILS'.
- Recipient Number:** A text input field containing 'ENTER ANY FAX NUMBER'.
- Recipients:** A table with columns 'Name' and 'Fax'. The table is currently empty, and a green arrow points to the 'Add' button next to it. Below the table is a dropdown menu with the text 'Details will move here'.
- Subject:** A text input field.
- Memo:** A large text area.
- Buttons:** 'Add', 'Addressbook', 'Send Coversheet' (checkbox), 'Preview', and 'About'.
- Footer:** 'Powered By FaxPL@form.com Copyright © 2006 Salmantine' and buttons for 'Setup', 'Cancel', and 'Send Fax'.



** The Subject field is also used to identify your fax in your fax log, so please use it.*

NB: This service requires online connectivity to the mail server chosen.

Note: The fax will be delivered instantly. You will also receive status and delivery confirmation reports via email.

6.0 Credits

Before you can go wild and fax all over the world, you will need your service to be activated by yourself (or Company IT administrator if you are a company user) by purchasing credits.

The best way to do this:

Step 1

Logon to the Fax Service provider's website with the username and password you got in your Welcome or Introduction email.

Note: if you cannot remember your login details simply contact your Fax services provider and request your details be resent to you.

Step 2

Once you have logged in please click on the "FaxOut" icon



Step 3

Complete the 5 easy steps

7.0 Web links and support information

FaxPL@form is the Intellectual Property provider and can be contacted should you fail to be able to contact your Fax Provider - we will forward you the correct contact and support information

Web: Main <http://www.faxplatform.za.net/>

E-mail: Technical Support support@faxplatform.za.net